



Update

VOL 27 • NO 7

A PUBLICATION OF BLOCK HOUSE MUNICIPAL UTILITY DISTRICT Oct/Nov 2018

Historical Savage Shell Casing Discovered in Block House Creek

by Sgt. Charles Kelley, Williamson Co. Sheriff's Office

A .250-3000 Savage shell casing was located by the old windmill behind the Walker House on 10/03/2018 after heavy rains in the area. Based on the condition of the shell casing, it is apparent the casing had been there for many years.

The .250-3000 Savage rifle cartridge was created by Charles Newton in 1915. Savage Arms was the original manufacturer. The .250-3000 Savage was designed to fit the popular Savage Model 99 lever-action rifle. Savage Arms reduced the recommended 100 grain bullet down to 87 grains to achieve a velocity of 3,000 ft/s. By reducing the bullet weight to 87 grains, Savage Arms became the first American cartridge company to achieve a velocity of over 3,000 ft/s. The speed of the bullet combined with the Savage Model 99 lever-action design made it a very desirable rifle for its time.

The .250-3000 Savage is most commonly known today as the "Savage .250." To the best of my knowledge and research, manufacturers no longer stamp the casings with ".250-3000." Savage Arms no longer manufactures a .250-3000/.250 rifle or ammunition. Remington, Winchester, and Hornady are a few companies that

still manufacture the .250 ammunition. They use the common ".250" stamp on the base of the shell casing with other unique letters to signify the specific company. I have been unable to narrow down the year the Savage Arms company quit using the ".250-3000" stamp. However, research shows the final decline of the .250 occurred as a direct result of the 1950s introduction of the .243 Winchester.

This photo of A. S. Walker, III on a horse with his son A. S. Walker, IV is dated 1924. There is a rifle in the scabbard attached to the saddle. It is possible the rifle in the scabbard is the Savage Model 99 in .250-3000 caliber.



Here Comes Santa Claus, Right Down Block House Drive!

The elves are busy preparing for Block House MUD's most beloved holiday event, Cocoa Christmas!

This year's celebration will be held on Saturday, December 15 from 4:00-7:00pm at the Walker House in Tumlinson Park. We expect our friends from the Cedar Park Fire Department to again deliver Santa right on schedule, so don't be late and bring a camera or cell phone to take pictures!



The complete list of activities is still being finalized, but we know there will be delicious cookies and hot cocoa, visits with (bilingual) Santa, crafts, a barrel train for kids, a professional photo booth, movie in the park, and maybe a few more surprises! And it's all free of charge for every Block House resident!

If you've ever attended this event in the past you know how much fun it is, and if you haven't, this is your year!

Stage 2 watering restrictions (two days per week) are in effect for Block House MUD

Bulky Item Pickup Service Guidelines from Texas Disposal (TDS)

Bulky service is provided for items that will not fit into regularly serviced trash carts or in any additional bags, bundles, or containers. These bulky items must still be processed through a regular, rear load trash truck, which means that items that are wider than the entry to compactor plate or have been found to cause damage to the mechanisms of the truck cannot be accepted. This is why there are size limits, and why some items cannot be taken as bulky service and require a call to remove construction debris.

When residents call Texas Disposal Systems at 512-421-1340 to schedule a bulky removal, multiple questions will be asked regarding the type, size, and weight of the material to be removed. This is so TDS can inform their drivers that they may have to make an additional trip or provide another truck to complete services, and to avoid harmful or overweight items from being included in the regular service.

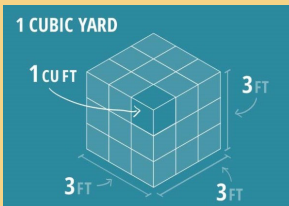
Once you have scheduled a pickup, make sure that all items for bulky service are positioned together at curbside. Drivers should not be removing personal items from private property and will only take items that have been listed for bulky removal.

All items must be curbside by 7:00am on the day of service. If items are not available at the time of scheduled service, charges will still apply and/or the bulky service will count toward contracted allowances (Block House MUD residents are allowed 6 bulky services per year). One bulky service is for 3 cubic yards.

Example of a Cubic Yard:

1 cubic yard is
3 feet x 3 feet x 3 feet

3 cubic yards is
9 feet x 3 feet x 3 feet



Sample List for what equals 3 cubic yards:

- 21-30 gallon trash bags or lawn/leaf bags or bundles.
Note: Bundles must be securely tied with twine, rope or duct tape, no longer than 4 feet in length, and no heavier than 40 lbs per bundle.
- Recliner or loveseat. Customer is able to put a couple of lightweight boxes on the recliner or loveseat.

- Twin or full size mattress and box spring or two mattresses without a box spring.
- A single queen or king mattress without a box spring.
- Small water heater or softener, drained with salt removed (less than 60 gal).
- Wood planks (such as privacy fence), MUST be free of nails. Not necessary to bundle.
 - The size of 1 piece of wood is 1 inch thick, 2 inches wide and 6 feet long.
 - Stack 5 boards per stack, up to 12 stacks or 50 planks total per single bulky service.
 - Two pallets (Pallets may be broken down, like other wood planks). Additional pallets need to be approved before scheduling.

Sample List for what equals 6 cubic yards (This would equal 2 bulky services):

- Full size couch or sleeper sofa. You may put a couple of lightweight boxes on the recliner or loveseat.
- Queen or King mattress and box spring, or two mattresses without box spring.
- Large appliance, such as a deep freezer or refrigerator (compressor/Freon must be removed and tagged by a licensed air conditioner technician), and a large water heater (over 60 gallons), drained.

Additional information

TDS will take the following in bulk pick-ups:

- Soft metal such as basketball goals, tether ball poles, and basically any soft metal that can easily be bent.
- Customers can leave light weight entertainment centers together, as long as they aren't more than 6'x8'.
- Carpet must be cut up into widths of 4 feet or less.
- Fiberglass tubs. Note: TDS will not take porcelain tubs.
- Toilets.

TDS will NOT accept the following items:

- Hazardous materials (e.g., paint, household cleaners)
- Construction material (sheetrock, insulation, roofing material, etc.)
- Tires, concrete, bricks, tile, shingles, soil and rocks
- Metal framed doors or sheets of glass/mirror larger than 4'x4' (must fit fully into hopper)
- Broken glass

Did You Know Block House Has a Wastewater Lift Station?

What are Lift Stations, and How Do They Work?

A lift station is used to pump wastewater or sewage from a low level to a higher level when the gradient of the area does not allow for a natural flow.

There are two main elements to a lift station: the wet well and the controls. The wet well is a basin into which the inflow is discharged and where the pumps sit. The control panel is the brain of the lift station.

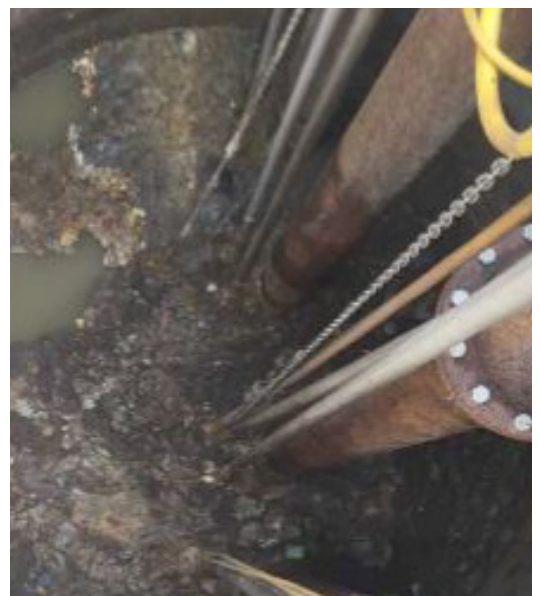
So, how do lift stations work? Sewage is stored and fed into a pit. Once this sewage reaches a certain level, electrical instruments recognize the pit is full and activate the pump, which will then pump the sewage out to its next destination. Most lift stations are housed underground to prevent health risks in a confined area, since the sewage can release poisonous gases like methane and hydrogen sulfide.

Proper maintenance includes wet wells being pumped out and cleaned, inspection of the pumps, greasing of the check valves, and cleaning of the floats to assure proper performance.

Grease and Synthetic Materials such as plastics and even disposable wipe solids are the number one cause of debris build-up on floats causing costly repairs.

The two main concerns brought up at the lift station are grease and what waste management calls “ragging”. The ragging, 99% of the time, consists of the “approved” flushable wipes, household disposable cleaning wipes, baby wipes, feminine hygiene products and kitchen grease of all types. **Please avoid flushing these items or pouring any grease down any drain.**

For more information on our lift station or any aspect of your water service, contact Crossroads Utility Services at 512-246-1400.



Block House MUD Board of Directors

Vanessa Longoria-Carter, President
Cecilia Roberts, Vice President
Rayan Horak, Secretary
Ursula Logan, Treasurer
Byron Koenig, Asst. Secretary

Contact the Board at
www.blockhousemud.com

**Block House MUD
General Manager, Restrictive
Covenants, and ACC Submissions**
Pinnacle Texas Management Services
Tanya Emmons
512-795-8461 or 512-259-0959
bhud@pinnacletexas.com
www.blockhousemud.com

**Crossroads Utility Services
Water Utility Operator/Billing**
Lisa Torres
512-246-1400
www.crossroadsus.com
customerservice@crossroadsus.com



Walker House Hours: The on-site representative is available to assist District residents from 9:00 AM to 1:00 PM on Mon., Tues., Thurs., and Fri., and from 2:00 PM to 6:00 PM every Weds.

Upcoming Events

Nov 10: Great BHC Campout
Nov 11: Veterans Day
Nov 20: MUD Board Special Meeting
to canvass election results
Nov 22-23: MUD office closed for
Thanksgiving holiday
Nov 28: MUD Board Meeting
Dec 8: Neighborhood Garage Sale
Dec 15: Cocoa Christmas
Visit www.blockhousemud.com
for more information

Would You Like a Printed Copy?

To have a paper copy of this and all future MUD newsletters mailed to you, please send your name and address via email to walkerhouse@blockhousemud.com or call 512-259-0959. You may also pick up a copy inside the Walker House during office hours (see sidebar).

Prepare for Wastewater Averaging and Winterize

The winter wastewater averaging period for Block House MUD is 12/3/2018 through 3/3/2019. Water usage measured during the three month averaging period (Dec/Jan/Feb) will be used to calculate each residence's wastewater bill for March 2019 through February 2020.

Customers are encouraged to conserve water during the winter averaging period to help lower bills. This includes limiting outdoor watering. Prior to the winter averaging period, residents should winterize irrigation systems, shut off irrigation controllers, and turn off back flow preventers. Winterizing irrigation systems commonly involves removing all water from the pipes to avoid freezing and damage, and should be done by a professional.

Budget Available on MUD Website

Approved budgets for the past several years are available to view on the MUD website, www.blockhousemud.com.

The FYE 2019 budget includes expenditures for water and wastewater services, park and pool maintenance and utilities, landscaping, professional administrative services including legal and management, additional Sheriff's security patrols, fire service, District functions, and other special projects.

Contact the MUD office through the website if you have any questions about the operating budget. Residents are also always encouraged to attend regular meetings of the Board of Directors, typically held on the fourth Wednesday of every month (subject to holiday changes) at 6:30pm in the Walker House.

Walker House Holiday Hours

The MUD office will be closed:

Thursday and Friday, November 22-23

Monday-Wednesday, December 24-26

Monday and Tuesday, December 31-January 1

We will be open on Veterans Day,
(observed) November 12

